



# Rondebosch Hockey Herald

ISSUE #39A 21 JULY 2010

E-mail Circulation is currently 310



Visit <http://www.sahockeyworld.co.za>  
to read about all things Hockey including RBHS



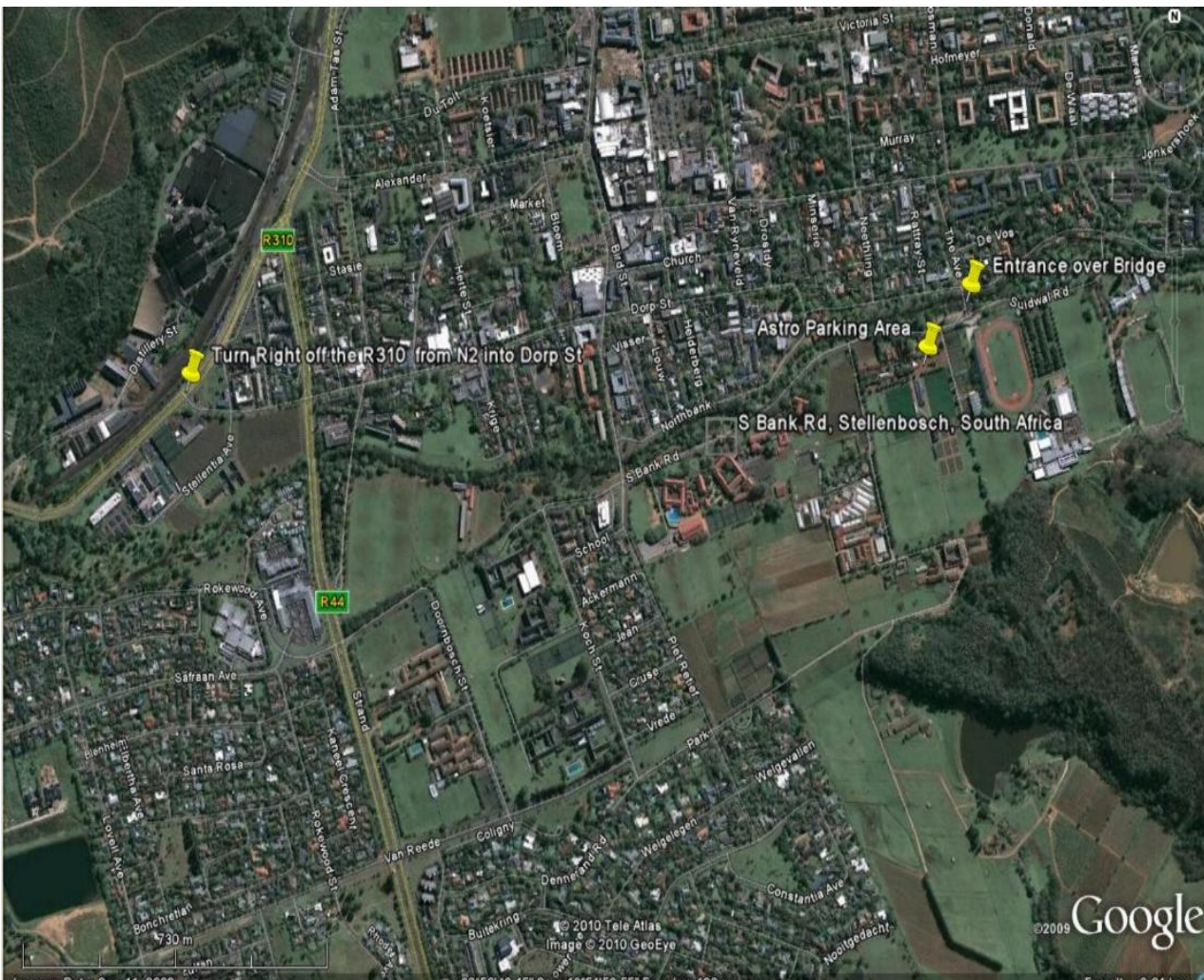
## Hockey Notice Board.

### *This weekend's fixtures.*

<u>Hockey Matches - Fri 23 and Sat 24 July 2010</u>					Friday
					Saturday
	Opponents	Venue	Field	Day	Time
U19A	Paarl HJS	Stellenbosch	Maties A	Fri 23	19:45
U19A	Stellenberg HS	WPCC	Astro	Sat 24	12:00
U19B	Paarl HJS	Stellenbosch	Maties A	Fri 23	18:30
U19B	Langa	WPCC	Astro	Sat 24	11:00
U19C	Paarl HJS	Stellenbosch	Maties B	Fri 23	16:30
U19C	Stellenberg HS (B)	RBHS	Hockey A	Sat 24	9:00
U19D	Paarl HJS	Stellenbosch	Grass A	Fri 23	17:30
U19D	Oude Molen THS	Oude Molen	Astro	Sat 24	09:30
U16A	Paarl HJS	Stellenbosch	Maties A	Fri 23	17:30
U16A	Stellenberg HS	WPCC	Astro	Sat 24	9:50

U16B	Paarl HJS	Stellenbosch	Maties B	Fri 23	18:30
U16B	Langa HC	Langa	Grass	Sat 24	09:00
U16C	Paarl HJS	Stellenbosch	Grass A	Fri 23	18:30
U16C	Stellenberg HS (B)	WPCC	Astro	Sat 24	8:50
U16D	Paarl HJS	Stellenbosch	Grass B	Fri 23	17:30
U16D	Camps Bay HS	Camps Bay	Camps Bay Sch.	Sat 24	09:00
U16E	Paarl HJS	Stellenbosch	Grass B	Fri 23	16:30
U16E	Stellenberg HS (B)	RBHS	Hockey B	Sat 24	9:00
U14A	Paarl HJS	Stellenbosch	Maties B	Fri 23	17:30
U14A	Stellenberg HS	WPCC	Astro	Sat 24	7:50
U14B	Paarl HJS	Stellenbosch	Maties A	Fri 23	16:30
U14B	Groote Schuur HS	Groote Schoor	Vredenhof Field (GSHS Bottom Field)	Sat 24	09:30
U14C	Paarl HJS	Stellenbosch	Grass A	Fri 23	16:30
U14C	Langa HC	Langa	Grass	Sat 24	10:00

*Google Earth Map of Stellenbosch University Hockey Fields.*



---

## Rondebosch Hockey Parents Support Committee

**Chairperson:** → **Cindy Giger** → **082 745 5831** → [cindy.giger@mweb.co.za](mailto:cindy.giger@mweb.co.za) |  
**Committee:** → **Linda Kietzman** → **072 867 9918** → [labradoor@telkomsa.net](mailto:labradoor@telkomsa.net) |  
→ **Crystal Schnehage** → **082 594 3995** → [crystal@netactive.co.za](mailto:crystal@netactive.co.za) |  
→ **Penni Sparkman** → **083 745 6393** → [sparkman@mweb.co.za](mailto:sparkman@mweb.co.za) |  
→ **Peter Henshilwood** → **082 548 5866** → [henshilwoodp@telkomsa.net](mailto:henshilwoodp@telkomsa.net) |  
→ **Claudel Muller** → **083 267 4094** → [claudel.muller@kenridge.org.za](mailto:claudel.muller@kenridge.org.za) |  
→ **Steve Prins** → **083 270 7225** → [espeypak@yahoo.com](mailto:espeypak@yahoo.com) |  
→ **Julian Thompson** → **082 820 3787** → [mwfatboy@mweb.co.za](mailto:mwfatboy@mweb.co.za) |  
→ **Lynne Wright** → **082 770 9680** → [lynnew@lithotech.co.za](mailto:lynnew@lithotech.co.za) |  
→ **Andrea Corfe** → **082 873 5951** → [corfe1@telkomsa.net](mailto:corfe1@telkomsa.net) |  
**Hockey Liaison** → **Clive Rutherford** → **082 490 6388** → [clive@dominio.co.za](mailto:clive@dominio.co.za) |

¶



¶

---

*Hockey Herald Newsletter published by on behalf of RBHS Parents Hockey Support Committee*